



# ABOUT BOUTECH WATERFRONT HOTEL 松河璞旅

## A fashionable Artistic Style and Human Touch Hotel

### Great frontage location for viewing the Keelung River

Boutech Waterfront Hotel is situated near Raohe Night Market, providing convenient access to Wufenpu Fashion Plaza, the Xinyi Commercial District, Taipei 101, and Songshan Cultural and Creative Park. We aim to accompany travelers from around the world to explore Taipei's vibrant and intriguing attractions of its charming people, beautiful scenery, and gourmet food within their own unique journey.



Boutech hotel is a halal-certified hotel group, we provide a **Muslim friendly** stay for Muslim to travel in Taiwan easily.

璞旅集團是經過清真認證的旅館，讓在台灣內旅遊的穆斯林朋友們不再感到煩惱！



## Access

ADD:No.112, Songhe St., Songshan Dist., Taipei City

Phone:+886 2 2528 1567

FAX:+886 2 2528 3877

[www.waterfronthotel.com.tw](http://www.waterfronthotel.com.tw)

5-minutes walk to Songshan MRT Station

7-minutes walk to Songshan Railway Station

5-minutes drive to Nangang Railway Station &

Nangang - Taiwan High Speed Rail



# Rooms & Experiences

Boutech Waterfront Hotel offers 42 guest rooms with view, totaling 6 room types.

Facilities: Open Kitchen \ BAR \ Self-service Coffee Maker \ Self-service Laundry Room \ Seating Area \ Business Center \ River Terrace

## Room Design

The entire space is designed in a light industrial style, offering comfortable and cozy rooms. We firmly believe that simplicity leads to the extraordinary, and every detail is meticulously crafted with care.

Room	Non-smoking	Bed Type	Guests	Size
Standard Room		Double / 10 Rooms	2	16 sqm / 177 sqft
Superior Room		Double / 8 Rooms Twin / 4 Rooms	2	18 sqm / 195 sqft
Japanese Style Room		Double / 4 Rooms	2	18 sqm / 195 sqft
River View Room		Double / 6 Rooms	2	16 sqm / 177 sqft
River View Balcony Room		Double / 4 Rooms	2	24 sqm / 266 sqft
Dormitory Room		Quad / 4 Rooms	4	13 sqm / 142 sqft

## Amenities

Bath & Personal Care | Equipped with automatic washlet / Cha Tzu Tang green-certified toiletries

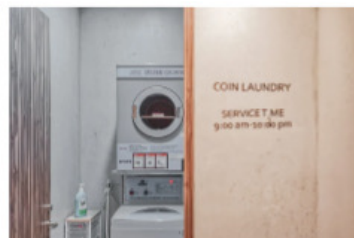
Entertainment | Free high-speed Wi-Fi / Smart TV

Comfortable Equipment | Air-conditioner / Slippers

Food & Beverages | Minibar / Mini fridge / Kettle / Tea / Ucc capsule coffee machine/ Welcome cookies

Safety Equipment | Smoke Detector / Safe

Furniture and Furnishings | Open Closet / Wooden Hangers



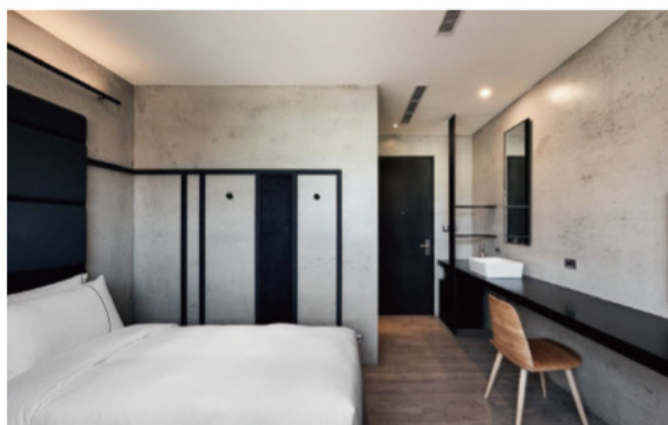
## Standard Room

Bed Type | Double 150\*190

No. of Rooms | 10 Rooms

Guests | 2 people

Size | 16 sqm / 177 sqft



## Superior Room

Bed Type | Double 150\*200

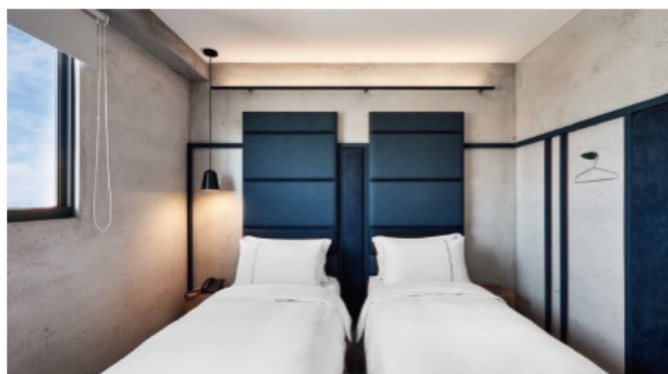
Twin 90\*200

No. of Rooms | Double 8 Rooms

Twin 4 Rooms

Guests | 2 people

Size | 18 sqm / 195 sqft



## Japanese Style Room

Bed Type | Double 180\*190

No. of Rooms | 4 Rooms

Guests | 2 people

Size | 18 sqm / 195 sqft



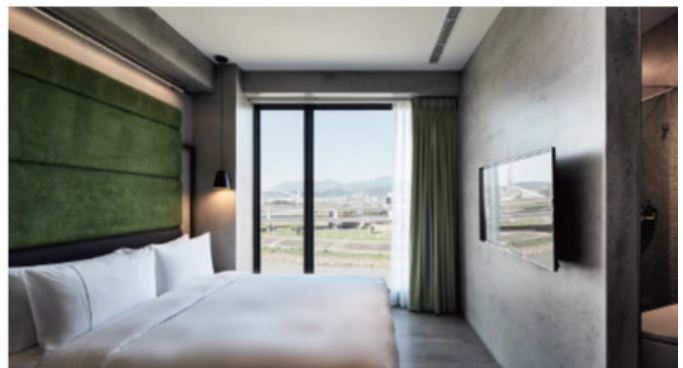
## River View Room

Bed Type | Double 150\*200

No. of Rooms | 6 Rooms

Guests | 2 people

Size | 16 sqm / 177 sqft



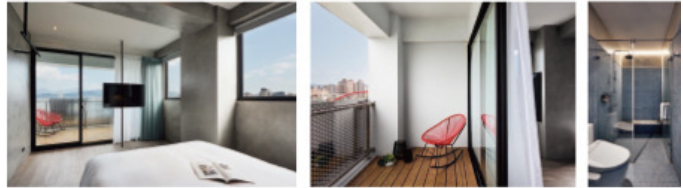
## River View Balcony Room

Bed Type | Double 150\*200

No. of Rooms | 4 Rooms

Guests | 2 people

Size | 24 sqm / 266 sqft



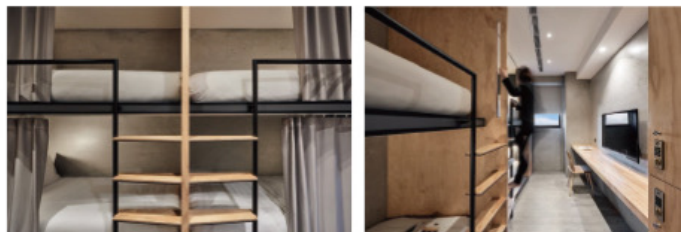
## Dormitory Room

Bed Type | Quad 90\*200

No. of Rooms | 6 Rooms

Guests | 4 people

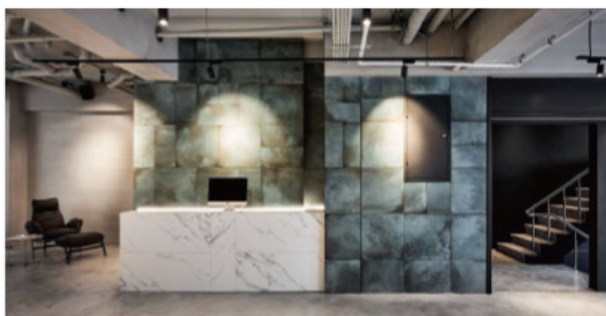
Size | 13 sqm / 142 sqft



# 玖玖玖BAR 24 Hours of Craft Beer



## Lobby・Seating Area・Open Kitchen・ Self-service Coffee Maker



## Self-service Laundry Room

**AM9:00-PM10:00**



waterfronthotel



@waterfronthotel



Official Website

ADD No.112, Songhe St., Songshan Dist., Taipei City  
TEL +886 2 2528 1567  
Email [waterfront.reservation@bouti.com.tw](mailto:waterfront.reservation@bouti.com.tw)